

# *Implementing Automated Testing is not so Automatic...*

*ESSI Process Improvement Experiment*

*23690 - MAGICIAN*

*Yoram Lev-Yehudi*

*Magic Software Enterprises Ltd.*

**MAGIC**



# Contents

- *Introduction*
- *Results*
- *Recommendations*
- *Acknowledgments*



# *Introduction*



**MAGIC**



## *Introducing Magic*

- *Application Development tool*
- *Rapid Application Development & Deployment (RADD)*
- *Wide range of platforms, operating systems, architectures, data base management systems*
- *Sold over 40 countries worldwide*

**MAGIC**





## *The PIE project*

- *Target: Magic V8 - Enterprise Edition*
- *Enhanced Web connectivity, N-tier architecture, version control system,...*
- *PIE focus: data base gateways part*
- *Baseline: traditional Manual Testing*
- *PIE: implementing Automated Testing*

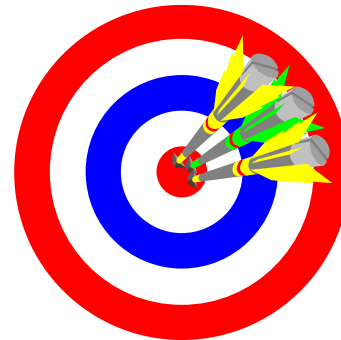


## *Involved companies*

- *Magic Software Enterprises Ltd. - develop, publish, market & support Magic V8 - Enterprise Edition*
- *KPA Ltd. - a leading Israeli management consulting firm*
- *Testing tool vendor - Mercury Interactive Corp. - WinRunner*

## Objectives

- *Increase testing coverage by 25%*
- *Improve version stability by 25%*
- *Reduce QA cycle time by 15%*
- *Be able to predict version quality*
- *Improve version reliability by 20%*



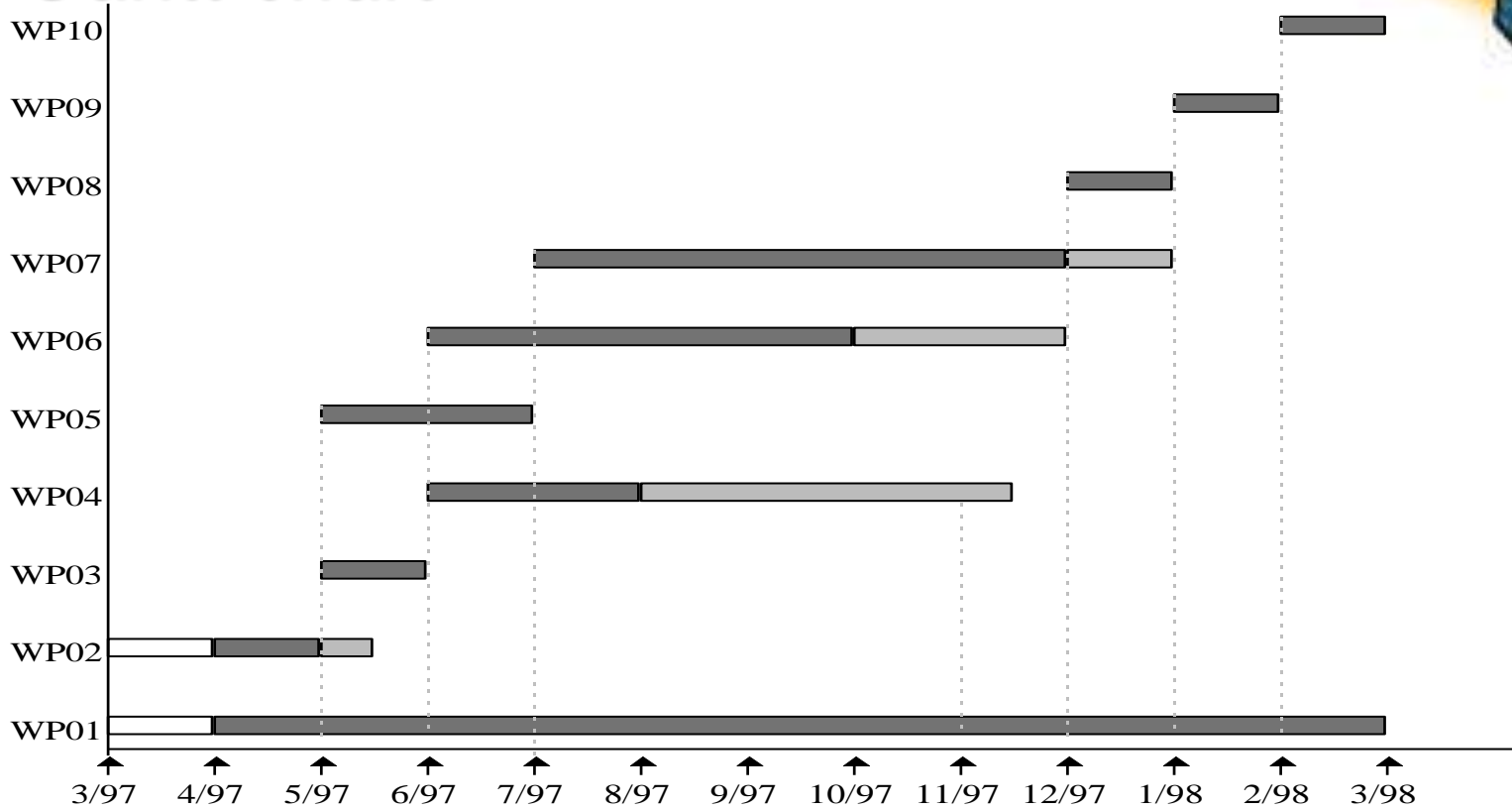
# Work packages

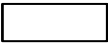


- *Project Management (WP01)*
- *Tool selection (WP02)*
- *Training (WP03)*
- *Setting up metrics (WP04)*
- *Integration of tools (WP05)*
- *Automated tests creation (WP06)*
- *Execution of tests (WP07)*
- *Analysis and reports (WP08-WP09)*
- *Presentation (WP10)*





# Gantt chart



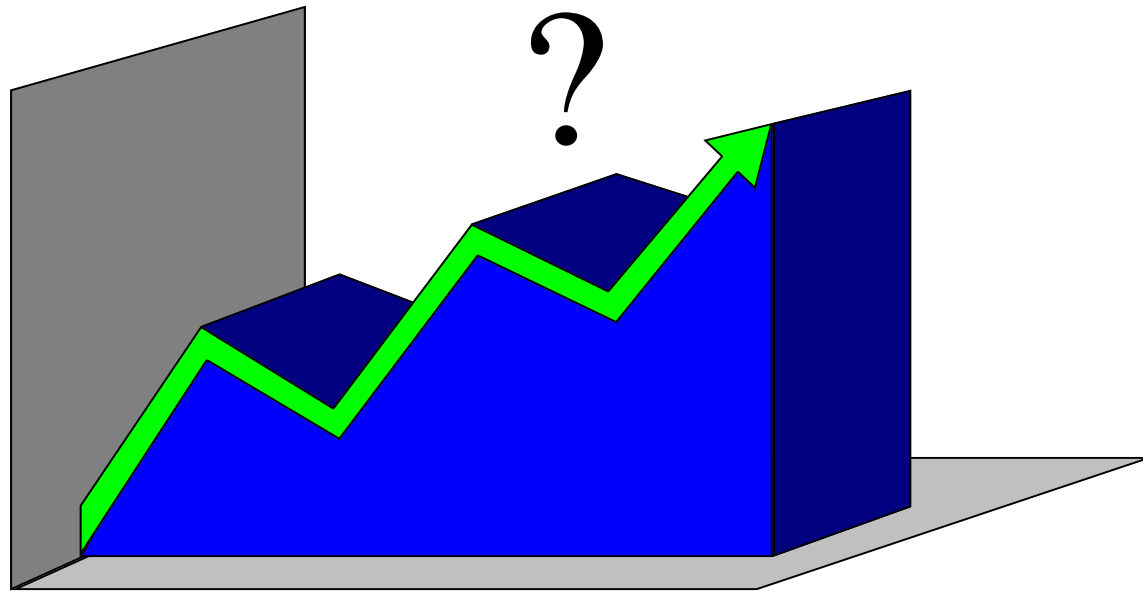
-  Late start
-  Planned duration
-  Late finish

## *Work performed*

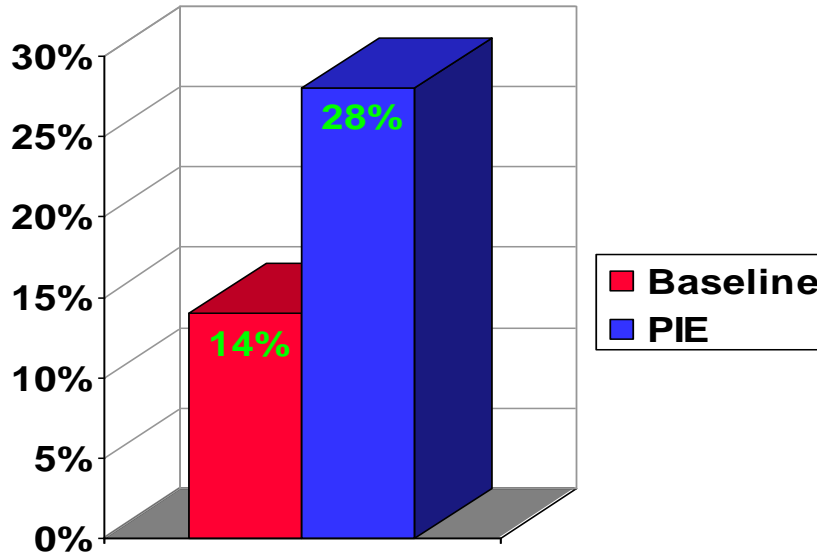
- *Setting metrics (WP04) - the most difficult to perform*
- *Integration of tools (WP05) - surprisingly on-time*
- *Automated tests creation (WP06) - the most time consuming process*
- *Subcontractors & EC Project Officer assistance - critical to project success*



# *Results of the experiment*



# Testing coverage

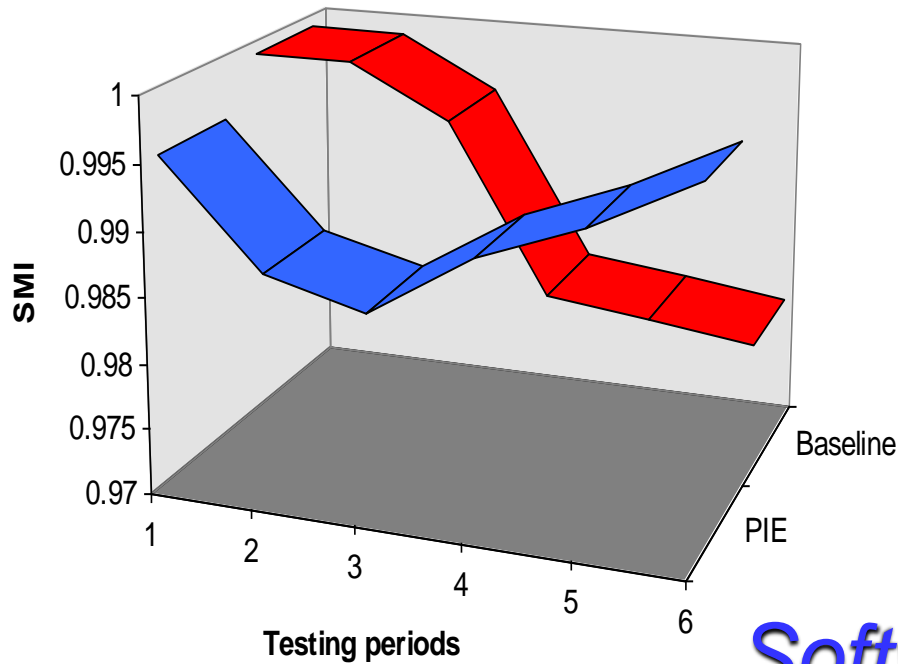


*Dramatically  
Increased*



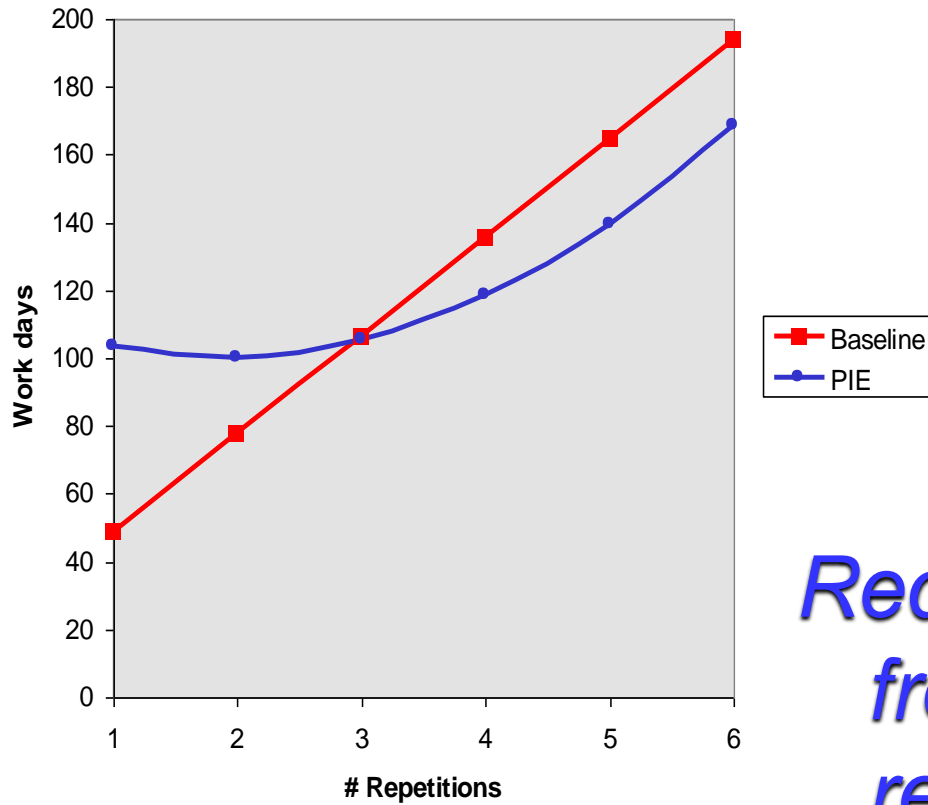


# Version stability



*Software Maturity Index (SMI) of the PIE is better*

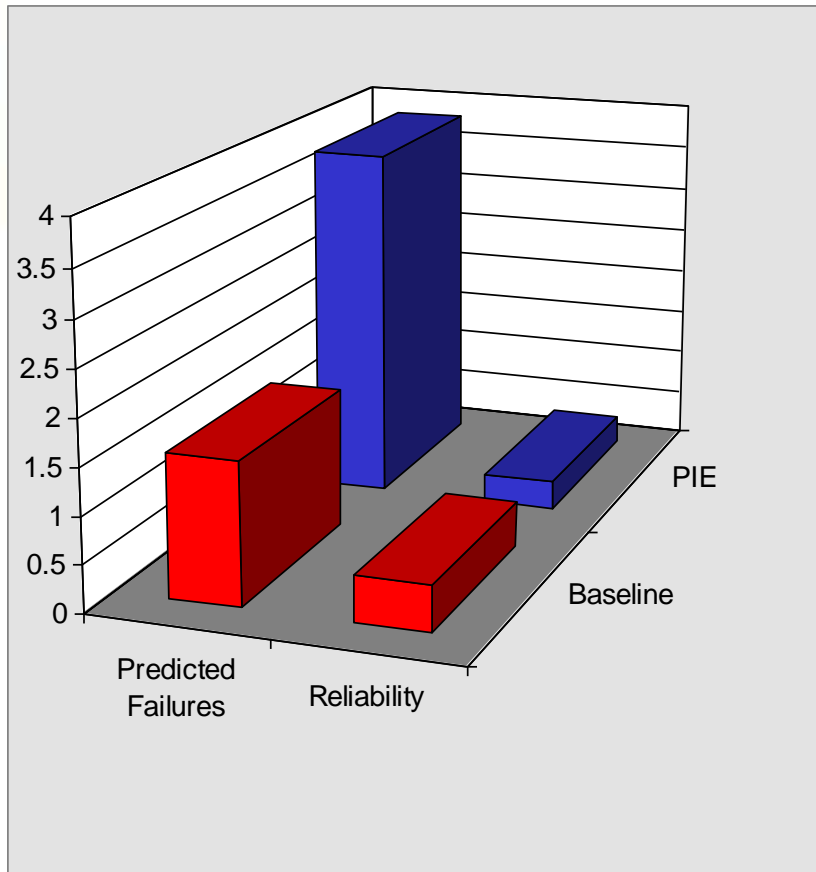
# QA cycle time



*Reduced - starting from the 3rd repetition*

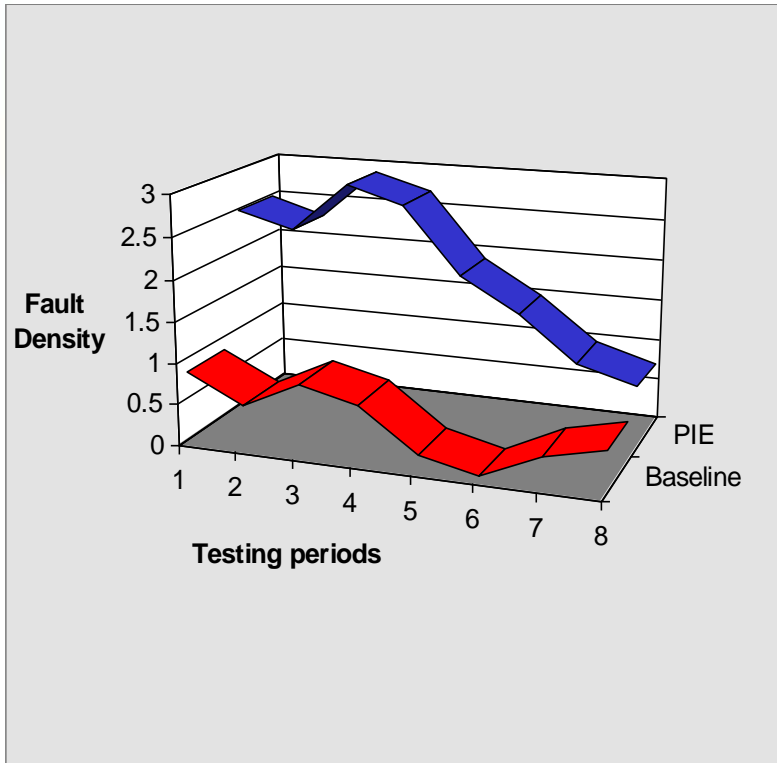


# Prediction of version quality level



*Both methods are measurable*

# Version reliability



*The automated process gives a better degree of confidence*

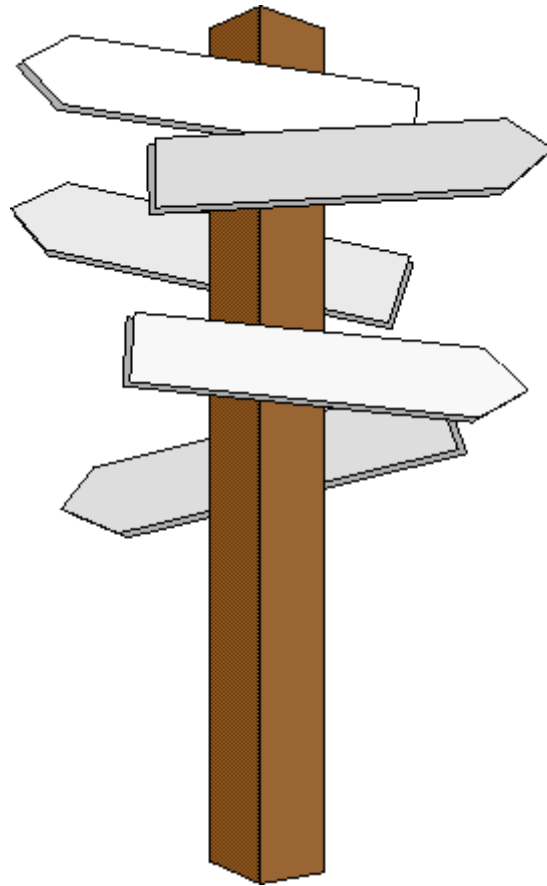


## *Qualitative results (Top 5)*

- *Complementary method*
- *Better degree of confidence*
- *Test a well-function software*
- *Analysis of results - time consuming*
- *Need of more professional and experienced employees*



# *Recommendations*

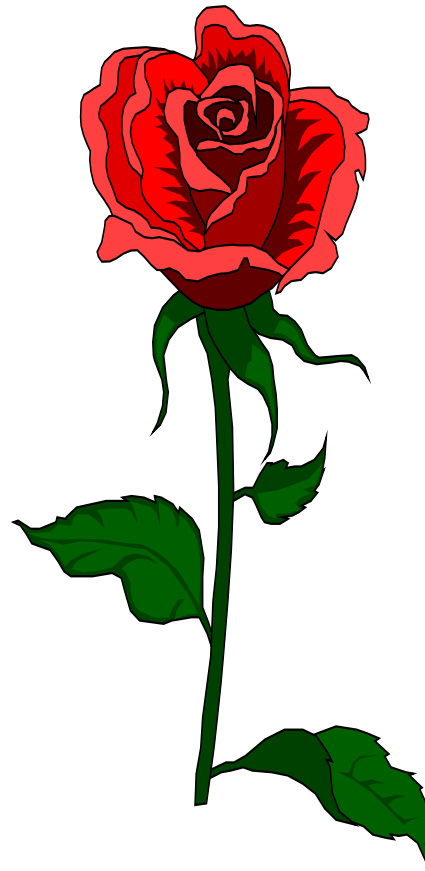


## *Recommendations (Top 5)*

- *Adopt new method as a standard*
- *Break the QA process into two levels*
- *Establish automated testing team in the Indian extension*
- *Improve the level of integration*
- *Define standards for automated testing of Magic applications*



# *Acknowledgments*



**MAGIC**





# Acknowledgments

Our deep appreciation to.....

- *The European commission* 
- *Our Project Officer (Dr. Rohen)* 
- *KPA consultants* 
- *Mercury engineers*
- *Magic Quality Control dept. employees*

*Thank you !*

MAGIC

